



**ATLANTIC**  
Fluid Tech

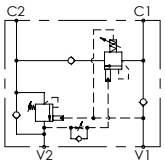
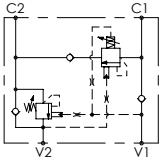
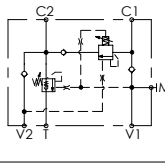
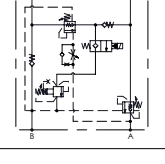
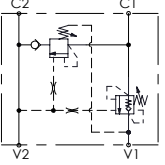
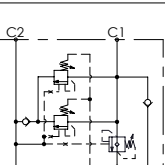
**SECTION  
7**

Regeneratives  
Valves

## SECTION 7



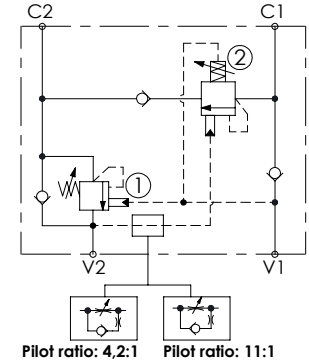
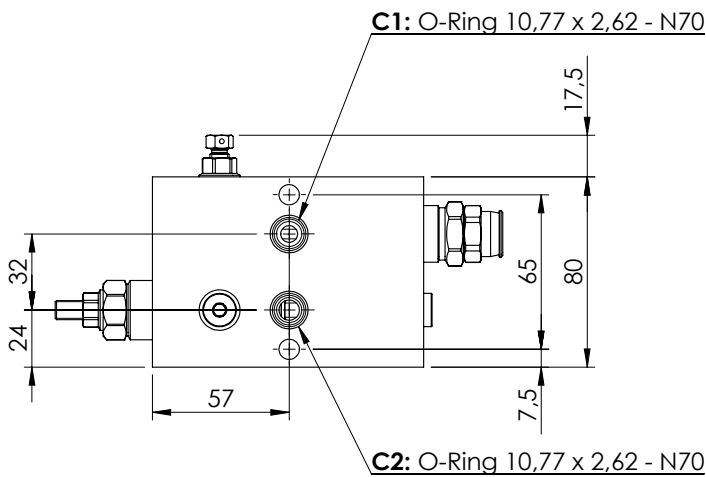
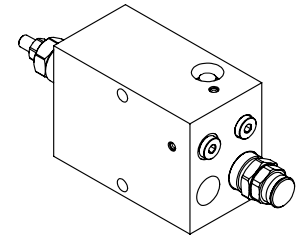
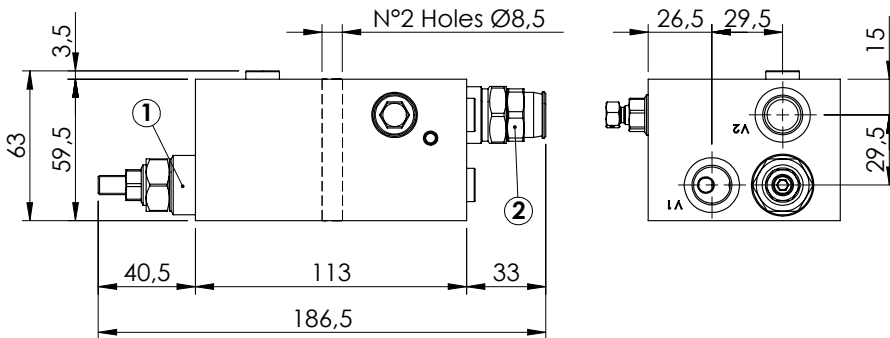
# REGENERATIVE VALVES

| Hydraulic scheme  | Valve description | Valve type                                 | Rated flow (l/min) | Max. pressure (bar) | Installation | Main port size or cavity type | Page     |
|---|-------------------|--|--------------------|---------------------|--------------|-------------------------------|----------|
|    | MRSN-060-ZBNV     | Single overcentre with regenerative        | 60                 | 350                 | Flanged      | G 3/8"                        | 7.01.010 |
|    | MRLN-060-ZLNP     | Single overcentre with regenerative        | 60                 | 350                 | In line      | G 1/2"                        | 7.02.020 |
|    | MRSN-150-ZLNV     | Single overcentre with regenerative        | 150                | 350                 | In line      | G 1/2"                        | 7.03.030 |
|   | MRDN-100-ZLNV     | Double overcentre with regenerative        | 100                | 350                 | In line      | G 3/4"                        | 7.04.040 |
|  | MRSN-300-ABNV     | Single overcentre with regenerative        | 300                | 420                 | Flanged      | 3/4" SAE 6000                 | 7.05.050 |
|  | MRSN-300-ABNE     | Single overcentre with double regenerative | 500                | 420                 | Flanged      | 1"-1/4 SAE 6000               | 7.06.060 |

REGENERATIVE VALVE

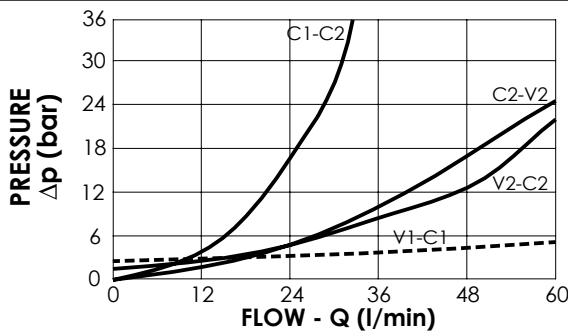
**MRSN-060-ZBNV**

REGENERATIVE



**SPECIFICATIONS**

|                          |           |
|--------------------------|-----------|
| Max. operating pressure: | 350 bar   |
| Rated flow:              | 60 l/min  |
| Manifold:                | Aluminium |
| Weight:                  | 1,6 kg    |



**NOTES**

Setting: at least 1.3 times the load induced pressure  
 Designed for aerial platforms

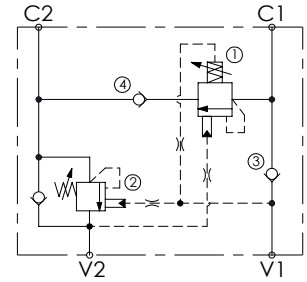
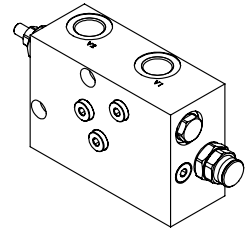
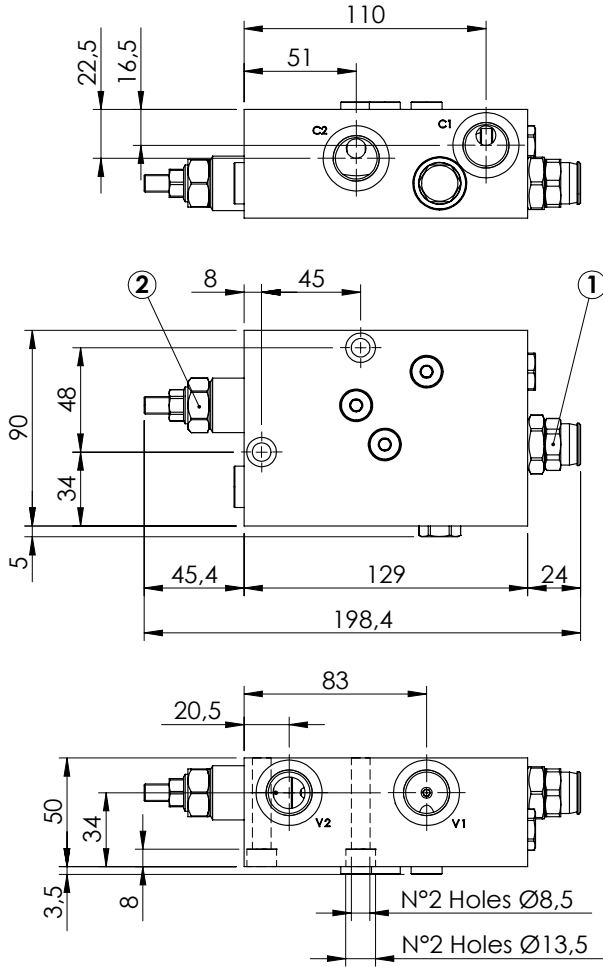
**ORDERING CODES**

| Quick code | Description               | Pilot ratio | Main ports size              | Standard setting (bar, Q=5 l/min) | Adjust. range (bar) | Pressure increase (bar/turn) |
|------------|---------------------------|-------------|------------------------------|-----------------------------------|---------------------|------------------------------|
| MB000035   | MRSN-060-ZBNV-11-G38-N350 | 11:1        | V1,V2 : G3/8"<br>C1,C2 : Ø 7 | 350                               | 100-350             | 69                           |
| MB000085   | MRSN-060-ZBNV-04-G38-N350 | 4,2:1       | V1,V2 : G3/8"<br>C1,C2 : Ø 7 | 350                               | 100-350             | 139                          |
|            |                           |             |                              |                                   |                     |                              |
|            |                           |             |                              |                                   |                     |                              |
|            |                           |             |                              |                                   |                     |                              |

REGENERATIVE VALVE

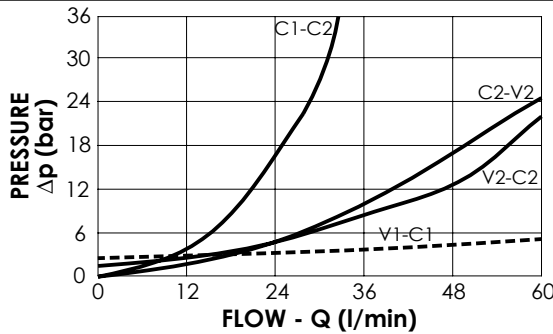
**MRSN-060-ZLNP**

REGENERATIVE



**SPECIFICATIONS**

|                          |           |
|--------------------------|-----------|
| Max. operating pressure: | 350 bar   |
| Rated flow:              | 60 l/min  |
| Manifold:                | Aluminium |
| Weight:                  | 1,71 kg   |



**NOTES**

Setting: at least 1.3 times the load induced pressure

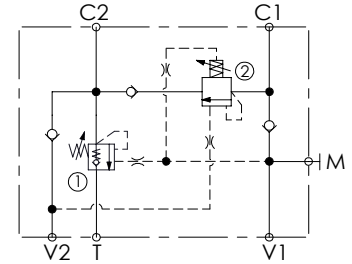
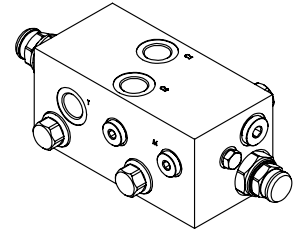
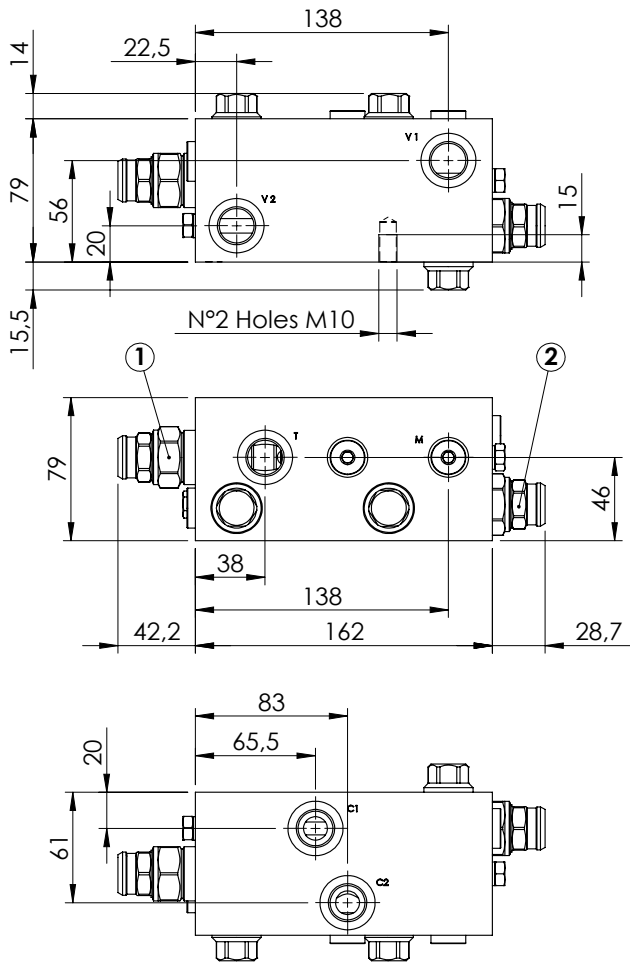
**ORDERING CODES**

| Quick code | Description               | Pilot ratio | Main ports size      | Standard setting (bar, Q=5 l/min) | Adjust. range (bar) | Pressure increase (bar/turn) |
|------------|---------------------------|-------------|----------------------|-----------------------------------|---------------------|------------------------------|
| MB000150   | MRSN-060-ZLNP-04-G12-N350 | 4,2:1       | V1,V2,C1,C2 : G 1/2" | 170                               | 60-210              | 62                           |
|            |                           |             |                      |                                   |                     |                              |
|            |                           |             |                      |                                   |                     |                              |
|            |                           |             |                      |                                   |                     |                              |
|            |                           |             |                      |                                   |                     |                              |

REGENERATIVE VALVE

**MRSN-150-ZLNV**

REGENERATIVE

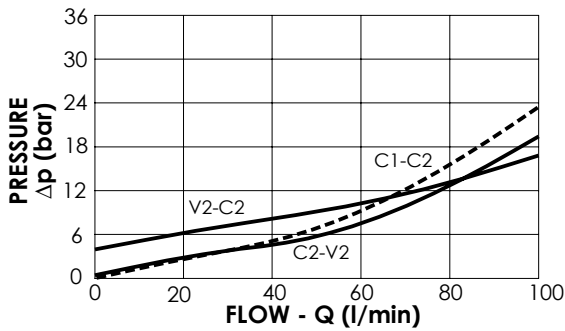


**SPECIFICATIONS**

|                          |           |
|--------------------------|-----------|
| Max. operating pressure: | 350 bar   |
| Rated flow:              | 150 l/min |
| Manifold:                | Aluminium |
| Weight:                  | 3,18 kg   |

**NOTES**

Setting: at least 1.3 times the load induced pressure  
 Designed for truck mounted cranes



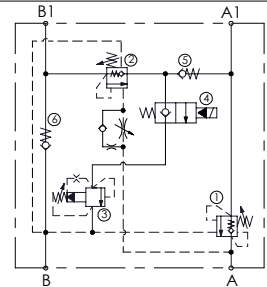
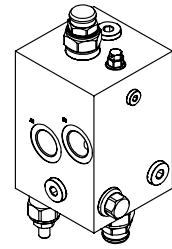
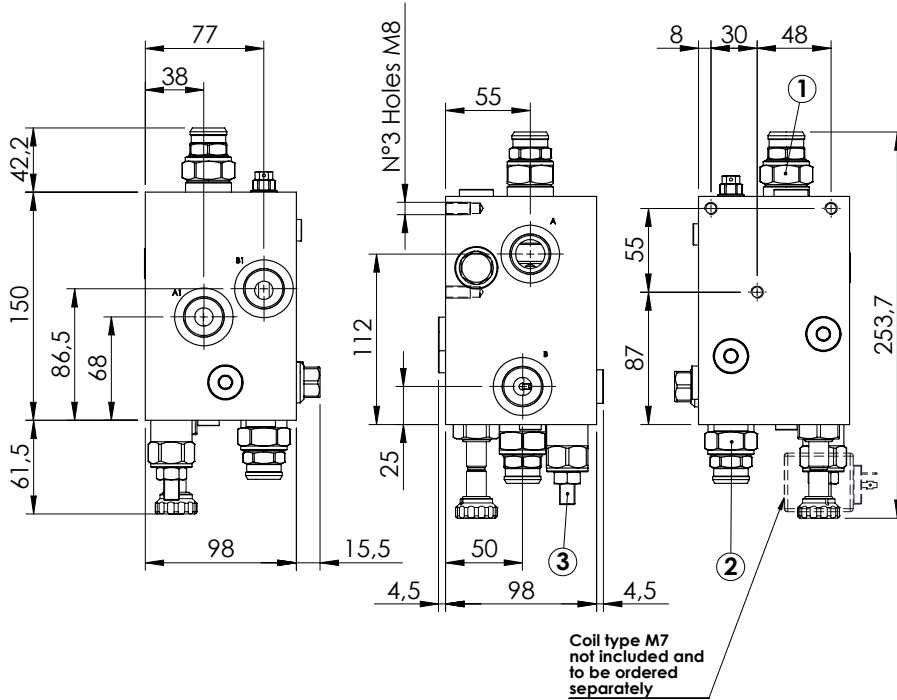
**ORDERING CODES**

| Quick code | Description               | Pilot ratio | Main ports size                   | Standard setting (bar, Q=5 l/min) | Adjust. range (bar) | Pressure increase (bar/turn) |
|------------|---------------------------|-------------|-----------------------------------|-----------------------------------|---------------------|------------------------------|
| MB000113   | MRSN-150-ZLNV-04-G12-N350 | 4:1         | V1,V2,C1,C2,T : G1/2"<br>M: G1/4" | 350                               | 100-350             | 104                          |
|            |                           |             |                                   |                                   |                     |                              |
|            |                           |             |                                   |                                   |                     |                              |
|            |                           |             |                                   |                                   |                     |                              |
|            |                           |             |                                   |                                   |                     |                              |

REGENERATIVE VALVE

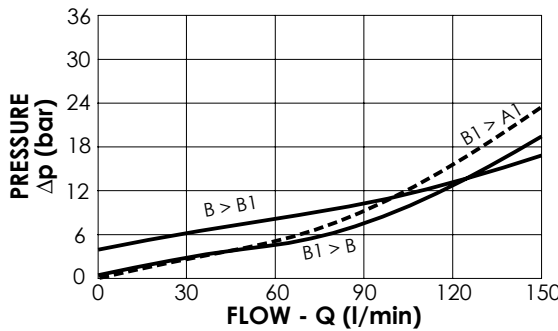
**MRDN-150-ZLNV**

REGENERATIVE



**SPECIFICATIONS**

|                          |           |
|--------------------------|-----------|
| Max. operating pressure: | 210 bar   |
| Rated flow:              | 100 l/min |
| Manifold:                | Aluminium |
| Weight:                  | 4,62 kg   |
| Coil type:               | M7        |



**NOTES**

Setting: at least 1.3 times the load induced pressure  
 Designed for truck mounted cranes  
 See chapter 18.00.000 for coils.

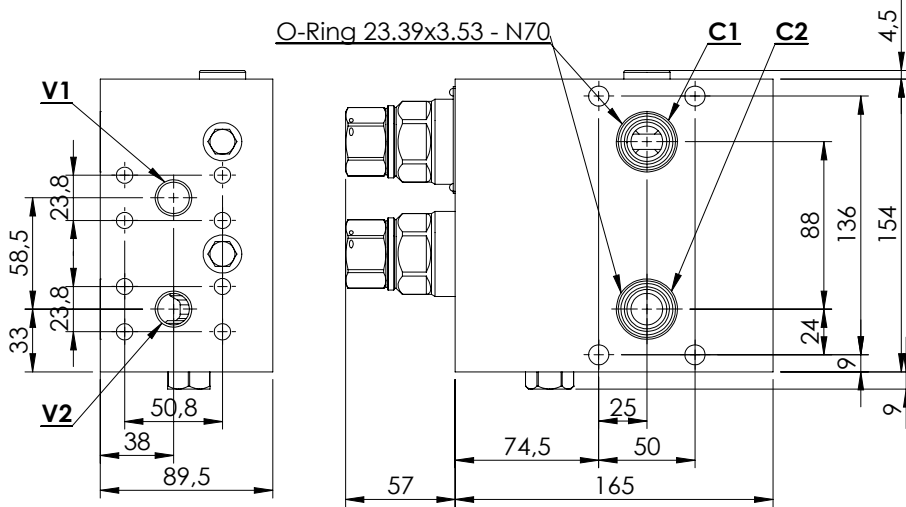
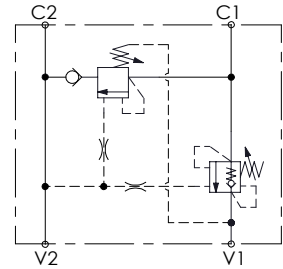
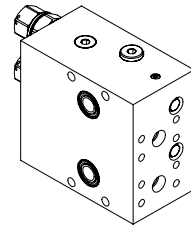
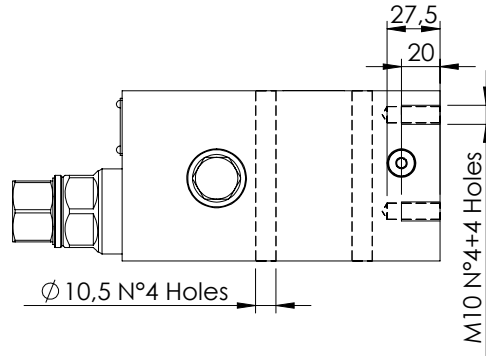
**ORDERING CODES**

| Quick code | Description               | Pilot ratio | Main ports size   | Standard setting (bar, Q=5 l/min) | Adjust. range (bar)     | Pressure increase (bar/turn) |
|------------|---------------------------|-------------|-------------------|-----------------------------------|-------------------------|------------------------------|
| MB000476   | MRDN-100-ZLNV-04-G34-N210 | 4:1         | A,A1,B,B1 : G3/4" | ①② 350<br>③ 350                   | ①② 100-350<br>③ 140-350 | ①② 103<br>③ 114              |
|            |                           |             |                   |                                   |                         |                              |
|            |                           |             |                   |                                   |                         |                              |
|            |                           |             |                   |                                   |                         |                              |
|            |                           |             |                   |                                   |                         |                              |

REGENERATIVE VALVE

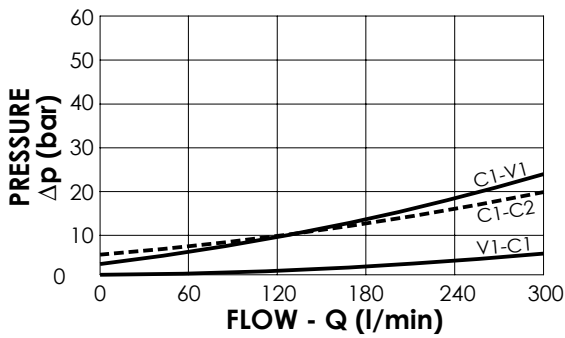
**MRSN-300-ABNV**

REGENERATIVE



**SPECIFICATIONS**

|                          |           |
|--------------------------|-----------|
| Max. operating pressure: | 420 bar   |
| Rated flow:              | 300 l/min |
| Manifold:                | Steel     |
| Weight:                  | 16,86 kg  |



**NOTES**

Setting: at least 1.3 times the load induced pressure

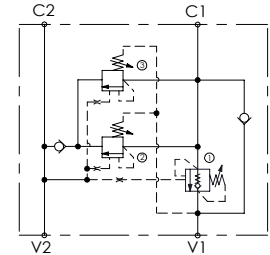
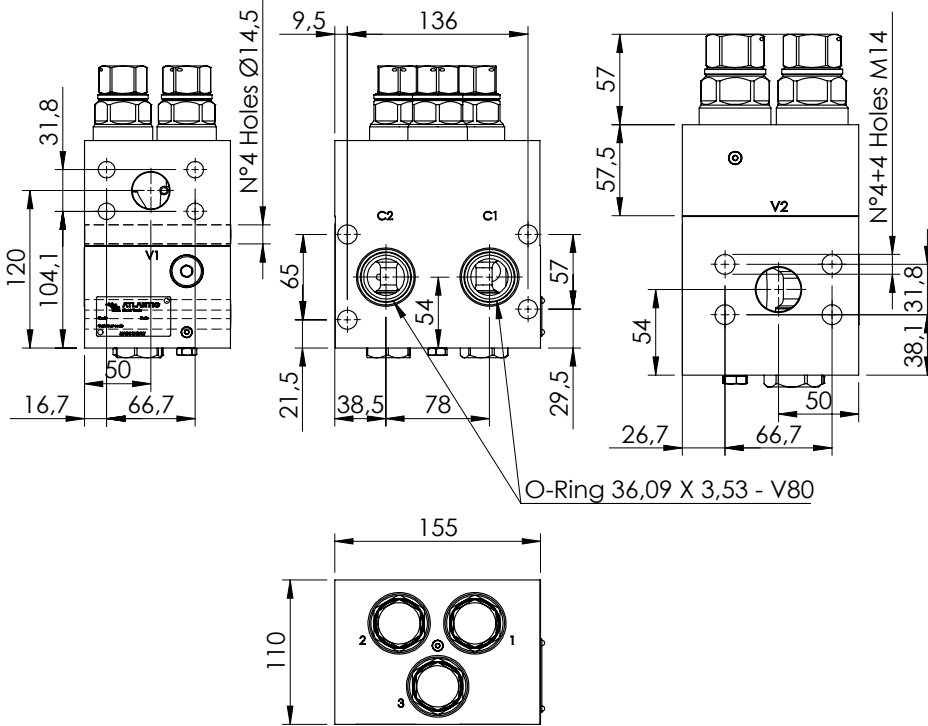
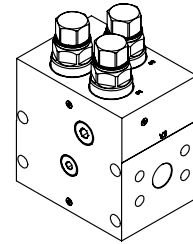
**ORDERING CODES**

| Quick code | Description               | Pilot ratio | Main ports size                      | Standard setting (bar, Q=5 l/min) | Adjust. range (bar) | Pressure increase (bar/turn) |
|------------|---------------------------|-------------|--------------------------------------|-----------------------------------|---------------------|------------------------------|
| MB000816   | MRSN-300-ABNV-06-S34-N420 | 6:1         | V1,V2: 3/4" SAE 6000<br>C1,C2: Ø16,5 | 250                               | 120-360             | 122                          |
|            |                           |             |                                      |                                   |                     |                              |
|            |                           |             |                                      |                                   |                     |                              |
|            |                           |             |                                      |                                   |                     |                              |
|            |                           |             |                                      |                                   |                     |                              |

REGENERATIVE VALVE

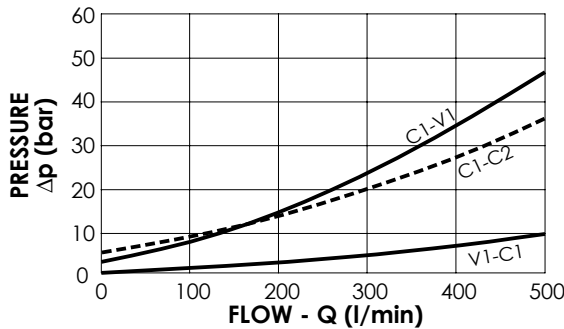
**MRSN-300-ABNE**

REGENERATIVE



**SPECIFICATIONS**

|                          |           |
|--------------------------|-----------|
| Max. operating pressure: | 420 bar   |
| Rated flow:              | 300 l/min |
| Manifold:                | Steel     |
| Weight:                  | 18,82 kg  |



**NOTES**

Designed for crusher scissors  
Valve for heavy duty working cycles with viton seals and reinforced plugs

**ORDERING CODES**

| Quick code | Description               | Pilot ratio | Main ports size                      | Standard setting (bar, Q=5 l/min) | Adjust. range (bar) | Pressure increase (bar/turn) |
|------------|---------------------------|-------------|--------------------------------------|-----------------------------------|---------------------|------------------------------|
| MB000132   | MRSN-300-ABNE-06-S11-V420 | 6:1         | V1,V2: 1-1/4 SAE 6000<br>C1,C2: Ø 28 | 250                               | 120-360             | 104                          |
|            |                           |             |                                      |                                   |                     |                              |
|            |                           |             |                                      |                                   |                     |                              |
|            |                           |             |                                      |                                   |                     |                              |
|            |                           |             |                                      |                                   |                     |                              |