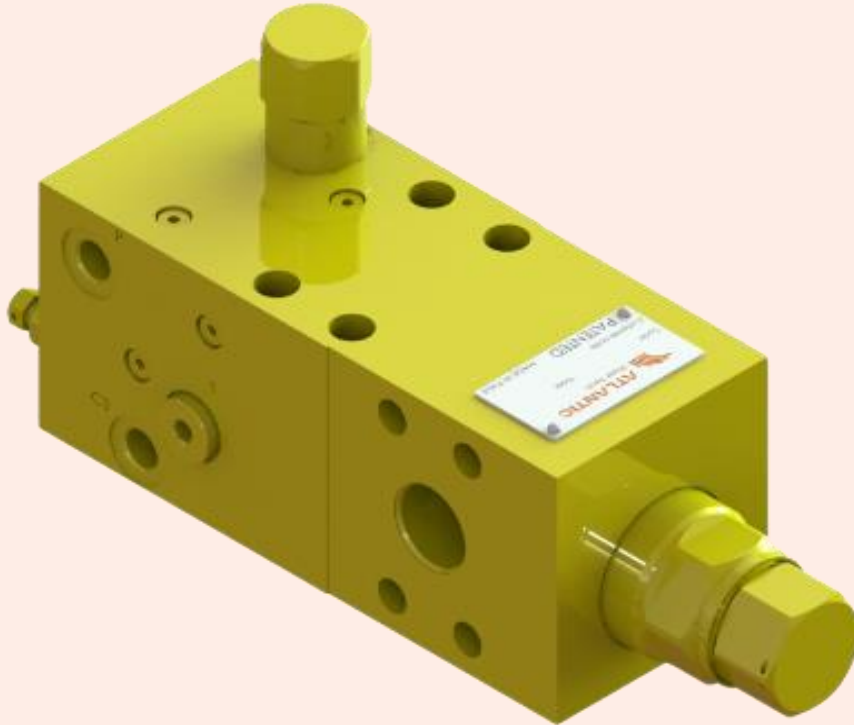


## OVERCENTRE VALVE FOR WINCH



### TECHNICAL DATA:

### DESCRIPTION:

|                             |                 |
|-----------------------------|-----------------|
| Maximum operating pressure: | 500 bar         |
| Rated flow:                 | up to 500 l/min |
| Manifold material:          | Steel           |
| Surface treatment:          | Zinc plating    |

|             |                 |
|-------------|-----------------|
| Main ports: | 3/4" SAE 6000   |
|             | 1" SAE 6000     |
|             | 1-1/4" SAE 6000 |

Operating temperature: -30/+100°C (NBR seals)

#### Main features:

- Fast response time (no differences with cold or hot oil temperature) thanks to Atlantic Fluid Tech M.A.D.D. patented solution.
- Perfect load lowering
- Availability of different valve sizes depending on machine range

