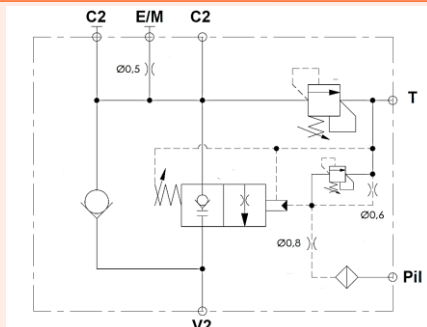


## LOAD LOWERING VALVE FOR BOOM



### TECHNICAL DATA:



<b>Maximum operating pressure:</b>	350 bar
<b>Rated flow:</b>	up to 250 l/min
<b>Manifold material:</b>	Steel
<b>Surface treatment:</b>	Zinc plating
<b>Main ports:</b>	3/4" SAE 6000
<b>Operating temperature:</b>	-30/+100°C (NBR seals)

### DESCRIPTION:

A new range of boom lowering control valves for telescopic cranes is now available, allowing perfect control of load movement during positioning of the boom, independently from load pressure.

We offer standard BSPP threaded port connections, as well as tailored solutions made on your special dimensional needs.

#### Main features:

- Perfect load lowering control, allowing very precise positioning of crane boom
- Pressure compensation of the movement, allowing stable and controlled boom movement in all working conditions, independently from the weight of the load