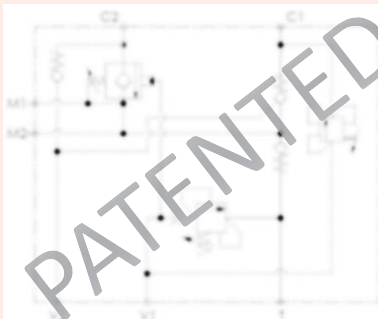


# GRAVITY LOWERING VALVE FOR BOOM



## TECHNICAL DATA:



<b>Maximum operating pressure:</b>	250 bar
<b>Rated flow:</b>	up to 60 l/min
<b>Manifold material:</b>	Aluminium
<b>Surface treatment:</b>	Anodization
<b>Main ports:</b>	BSPP - JIS - SAE
<b>Operating temperature:</b>	-30/+100°C (NBR seals)

## DESCRIPTION:

A new range of valves specially designed for boom movement control of Aerial Work Platforms is now available, allowing perfect and precise control during boom lowering and reduced energy consumption, thanks to innovative Atlantic Fluid Tech Gravity Lowering Valve **patented** solution, especially suited for battery driven machines. Flanged construction allows perfect interchangeability with most diffused market standards, while we offer also tailored solutions to meet any special dimensional needs.

### Main features:

- Perfect boom lowering stability, independent from load pressure and boom position, allowing very precise movement of AWP arm
- Energy saving (up to 70% reduced power consumption)
- Interchangeable with most diffused market standards, for easy application to existing machines