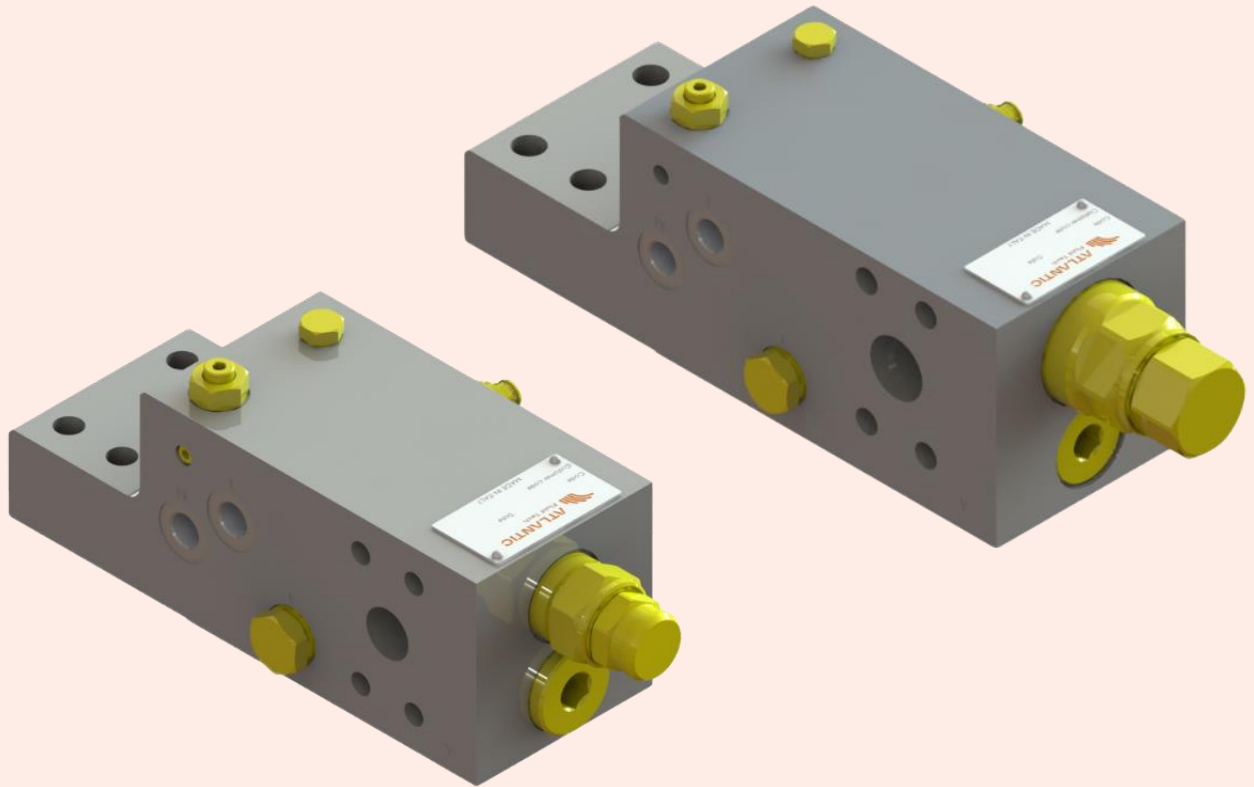
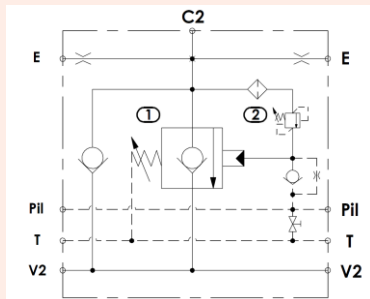


FLANGEABLE HOSE BURST CHECK VALVES



TECHNICAL DATA:

DESCRIPTION:



Maximum operating pressure:	420 bar
Rated flow:	up 400 l/min
Manifold material:	Cast Iron
Surface treatment:	Zinc Nickel plating
Main ports:	3/4" and 1" SAE 6000
Threaded ports:	BSPP - JIS - SAE
Operating temperature:	-20/+200°C (Viton seals)

A new range of ISO 8643 compliant, flangeable hose burst check valves is now available, allowing faster movement during lifting and softer opening during load lowering and relieving.

We offer standard ISO6162-1 and ISO6162-2 flange connections, as well as double standard flange.

We can design also flanged ports tailored on your special flange dimensions.

Main features:

- Robust design (no external plugs exposed to high pressure)
- Reduce pressure drop (up to 40% lower compared to market standards)
- Improved metering performance (longer stroke of main piston, availability of special metering pistons)